

New GBR SYSTEM

The New GBR System offers the operation surgeon unique features and user friendly capabilities.



Wide head screw

Wide head design is well suited for GBR mesh and membrane optimally.

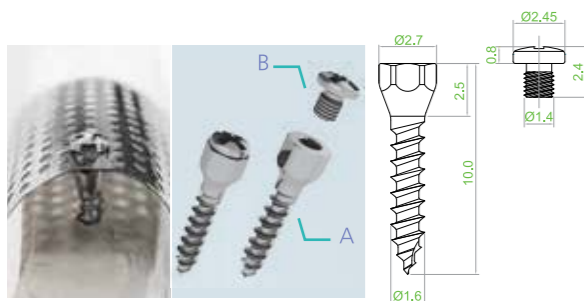
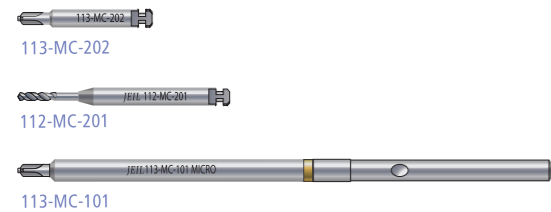
Code	Head Diameter (A)	Outer Diameter	Length(L)
14-AT-003G			3
14-AT-004G	Ø3.0	Ø1.4	4
14-AT-005G			5

Unit:(mm)

Instrument

- 113-MC-202 Micro Driver Shaft (for Angle)
- 112-MC-201 Micro Pilot Drill Bit (for Angle)
- 113-MC-101 Micro Driver Shaft (for Hand body)
- 111-010 Hand body
- 112-083 Screw Block

*Sometimes, pre-drilling could be needed at the decision of the surgeon.



Tenting Screw

Tenting Screw for creating the space for graft.

Code	Head Diameter	Outer Diameter	Length
A 16-TT-010	Ø2.7	Ø1.6	10
B Cap Screw	Ø2.5	Ø1.4	1.6

Unit:(mm)

Instrument

- 113-MJ-103 Hexa Driver Shaft (for Handbody)
- 113-MC-101 Micro Driver Shaft (for Handbody)
- 111-010 Hand Body
- 112-083 Screw Block

*Sometimes, pre-drilling could be needed at the decision of the surgeon.



Instruments



Mesh Puncher
111-048

Place a mesh to Tip position of Mesh Puncher to make a hole in desired position. Press Mesh Puncher to make a hole. (Punching diameter Ø1.5)



Hand Body
111-010



Screw block
112-083

Titanium Mesh Plate

Titanium mesh is efficient to protect the graft and form the space. Multiple pores help blood supplying and minimize exposure of soft tissue.

Customized mesh design minimizes necessity of cutting and bending.

Flexibility

Biocompatibility

Stability

bioactivity

Code	Size	Thickness	Pore diameter
12-GM-L01	53.0 x 29.0	0.15T	Ø0.8
12-GM-J01	41.0 x 21.9		
12-GM-P01	16.6 x 10.0	0.15T	Ø0.8
12-GM-P02	28.0 x 10.0		

Unit:(mm)

Fixation MESH

Titanium mesh as an alternative to a membrane.

Dental implant and GBR can be done at the same time easily.

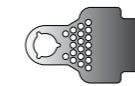
Unnecessary edges can be cut.

Single Mesh

Buccal or Lingual area

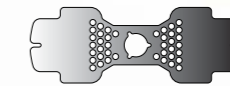
Double Mesh

Lingual and Buccal area



12-GM-P01

0.15T, Pore diameter Ø0.8, Fixing Ø3.1



12-GM-P02

0.15T, Pore diameter Ø0.8, Fixing Ø3.1

Horizontal Smooth Bending MESH

Horizontal and vertical bone volume augmentation of implants sites using guided bone regeneration with titanium mesh.

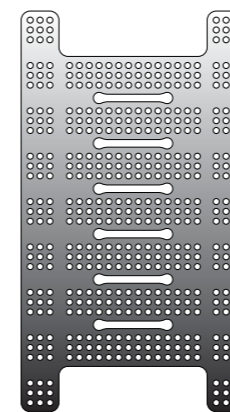
Suitable for multi-case. Excellent bone formation and spatial retention for stable implant.

Excellent flexibility with thin thickness. Pre-cut design enables to make desired shape easier.

Bone screw is required for fixation.

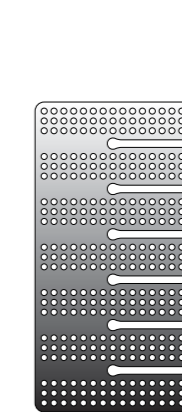
Wall augmentation for Vertical defect J or U shape bending

Wall augmentation for Horizontal defect L shape bending



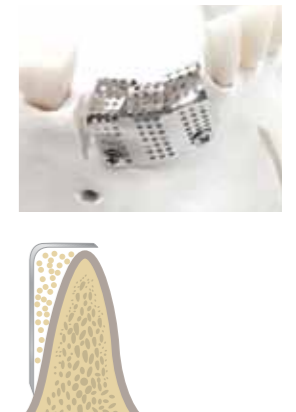
12-GM-J01

41mm x 21.9mm, 0.15T, Pore diameter Ø0.8



12-GM-L01

53mm x 29mm, 0.15T, Pore diameter Ø0.8



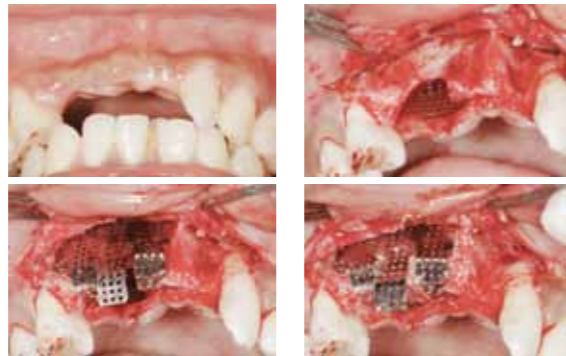


www.jeilmed.co.kr

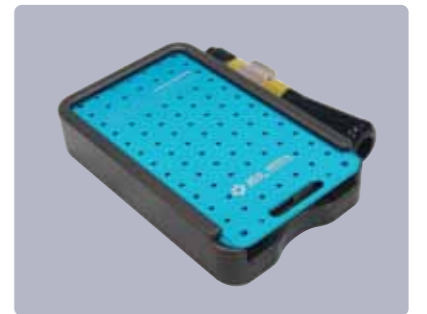
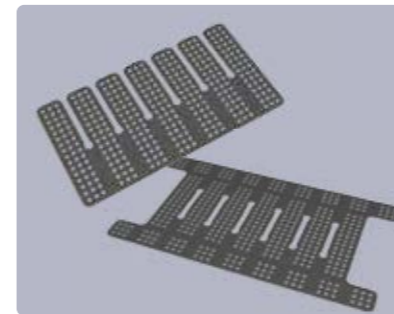
#702 Kolon Science Valley 2nd, 55,
Digital-ro 34(Previously 811, Guro-Dong), Guro-Gu, Seoul, 152-050, Korea

Tel : 82.2.850.3904 Fax : 82.2.850.3537

info@jeilmed.co.kr



NEW Guided Bone Regeneration
GBR System
Customized Titanium Mesh



GR-C-EN 1210 Re.05

